



AIRLINX SYSTEM



sales@airlinxsystems.com



04237874835
04237881316



airlinxsystems.com



48 PIA Main Boulevard, Block C Pia Housing Scheme, Lahore
63, Mall Road Lahore



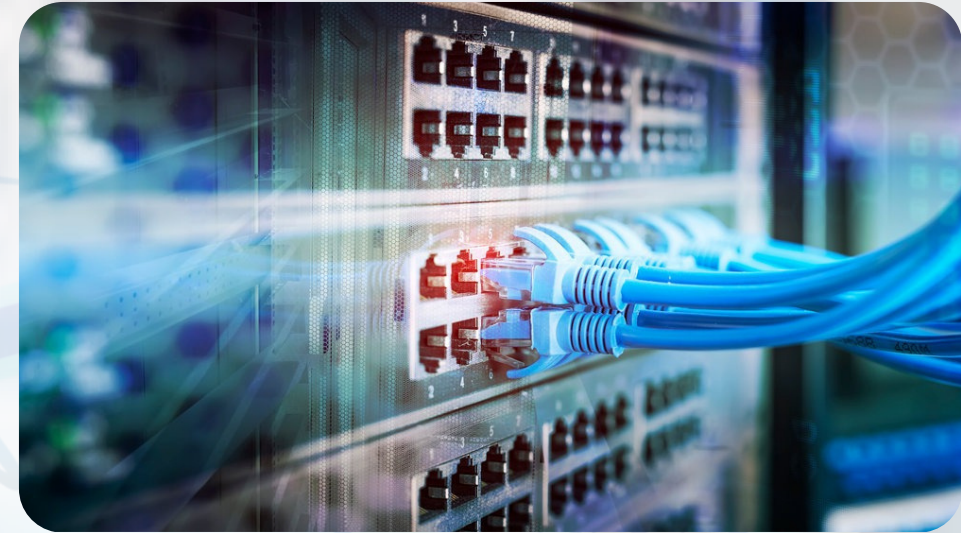


History of Company

Our company started its processes in 1991 with the passage of time it has proved its capabilities and improved its services with the latest equipment and Technology. It has gained excellent reputation in sales and services in the corporate sector as well as in providing services to individual clients. Airlinx is a new venture of HRC specializing in WiMAX, Wi-Fi, Surveillance systems, and IP T.V. equipment and services in collaboration with companies like Ubiquiti Networks, HULU (A WiMAX forum Principal Company), ALCON, SENAO, and many other technology partners.

WIRED NETWORKING

- **NETWORK INFRASTRUCTURE**
LAN AND WAN SOLUTION



Think of network infrastructure as technological resilience, enabling your organization to support and adapt to ever-changing conditions and needs. Airlinx understands the imperative of designing and cultivating a successful network infrastructure that balances flexibility and functionality, reliable connectivity, and cost.

Our experts, networking consultants, and networking engineers design the most robust and cost-effective WAN solutions available, such as IPLC, IPVPN, and VPN, depending on your business needs. We have the right people, the right technology, and the right partners to design, build, and manage your networks.

• UNIFIED COMMUNICATIONS

Unified communications is an evolving set of technologies that automates and unifies human and device communications in a common context and experience.

It optimizes business processes and enhances human communications by reducing latency, managing flows, and eliminating device and media dependencies.

Unified communications (UC) is the integration of real-time communication services such as Instant Messaging (Chat), Presence information, Telephony (including IP Telephony), Video Conferencing, Data sharing (including web-connected electronic whiteboards or Interactive White Boards), Call Control, and Speech recognition with non-real-time communication services such as Unified Messaging (integrated Voicemail, e-mail, SMS and Fax).

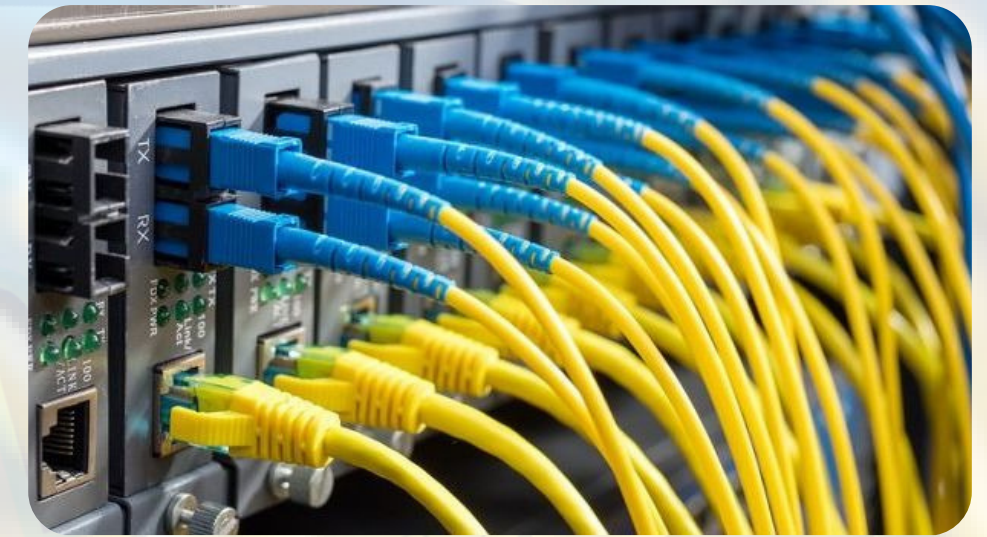


• STRUCTURE CABLING

When your business employs technological solutions before its growth, it often finds itself reaching the limit of its cable infrastructure design. Speeds need to improve and

structured communications have to be set up in place for your business to run smoothly. Cluttering and congesting of cable structures can be a hindrance for both communications infrastructure and the location its placed in.

To solve these issues, structured cabling solutions need to be implemented. Airlinx-certified engineers will design, plan, engineer, and execute the wiring foundation needed to meet your current and future needs. From single to multi-point connectivity, we can custom design a cable infrastructure for your organization today that will be scalable for future growth. If you're thinking about rewiring or reorganizing your current setup to prepare for growth, that's well within our wheelhouse too. Our start-to-finish solutions include data center design, fiber optics, and wireless design and implementation.



• MONITORING CONTROL SYSTEM

Monitoring Control System (MCS) is a central call center which links customer and alarm systems to safety, health, and regulatory authorities.

This center delivers unprecedented integrated safety and security to clients by linking alarm systems to central monitoring, troubleshooting, and communication with the local police, hospitals, fire stations, town council headquarters, and other legal authorities. Communication is established through the AirlinxSecurity System.



• CONSULTATION

At Airlinx, we have years of experience providing complete security solutions to customers across the country. We've invested heavily in keeping up with the latest trends in technology, regulations, and best practices.

Airlinx understands that every company or organization has unique security challenges and requirements. By performing on-site facility security surveys and discussing your daily business operations, Airlinx learns the needs of your company and assists in meeting your company's needs and objectives.



WIRELESS NETWORKING

Wireless networking is a method by which homes, telecommunications networks, and business installations avoid the costly process of introducing cables into a building, or as a connection between various equipment locations.



ACCESS MANAGEMENT SYSTEM



- **ATTENDANCE MACHINES**

Time and attendance systems (TNA) are used to track and monitor when employees start and stop work. A time and attendance system enables an employer to monitor their employees working hours and late arrivals, early departures, time taken on breaks and absenteeism.

- **ROAD BLOCKERS**

Road Blockers and Tyre Killers are heavy duty and anti-terrorist barriers that are installed at high-sensitive areas where unauthorized vehicle have strict restrictions for access.



- **PARKING BOLLARDS**

Bollards are short, functional posts installed in the parking lot to protect pedestrians and infrastructure.



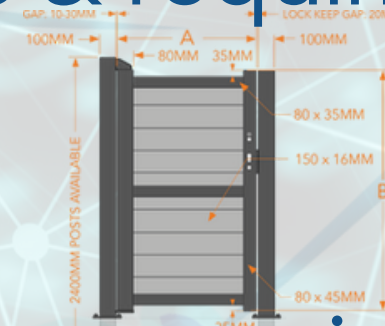
- **RFID CONTROLLERS**

RFID controllers are simple and easy to use RFID technology-based hardware component that efficiently reads radio-frequency identification (RFID) tags, which enables to open door locks.



- **WALKTHROUGH GATES**

Walk-through Gates are metal detectors for pedestrians; ideal for locations having high human traffic & requiring their physical check for any metal.



- **PEDESTRIAN GATES**

Pedestrian gates essentially allow residents to enter a location or property through a narrow entry way, and they can have both functional and aesthetic purposes.

- **TURNSTILE**

A post with arms pivoted on the top set in a passageway so that persons can pass through only on foot one by one.



- **HAND HELD METAL DETECTORS**

Handheld metal detectors work by emitting an electromagnetic field that detects the presence of metal or metallic objects.



• ACCESS CONTROL

Having true access control for your business doesn't only mean preventing access to high-security areas. It also means ensuring that employees and visitors can gain access to the areas needed at the right times with minimal barriers. Having effective access control systems in place is one of the most reliable ways to protect your business, property, and company information. Airlinx Security can design and install an access control system that allows people to get to where they are needed at the right times, while also preventing unauthorized access to restricted areas.



Airlinx provides multiple options when it comes to managing your access control system. Depending on your solution, we can provide either a software- or web-based management application, which your team can use to easily manage your access system. Access control systems can also be integrated with intrusion systems, video surveillance systems, HR databases, badging, visitor entry systems, and more, allowing for greater control across your security platform.

PAS

▪ PUBLIC ADDRESS SYSTEM

Public Address System (PA system) is an electronic sound amplification and distribution system with a microphone, amplifier and loudspeakers used to allow a person to address a large public, for example for announcements of movements at large and noisy air and rail terminals.



FAS

• FIRE DETECTION SYSTEM

AIRLIX PROVIDES A PROVEN SOLUTION TO HELP YOU MEET YOUR LOCAL AND NATIONAL BUILDING AND FIRE CODE REQUIREMENTS. UTILIZING CODE-COMPLIANT EQUIPMENT, CSP HAS THE EXPERTISE TO MEET THE NEEDS OF YOUR FIRE ALARM REQUIREMENTS. PROTECT EMPLOYEES AND VISITORS TO YOUR FACILITY AND CAN REDUCE THE RISKS TO YOUR BUSINESS.

CSP FIRE DETECTION SYSTEM PROVIDES:



- BUILDING & FIRE CODE COMPLIANCE
- FM FIRE MONITORING WITH DISPATCH
- EARLY NOTIFICATION
- STAND ALONE OR INTEGRATED PANELS
- ADVANCED DIAGNOSTICS & OCCUPANT NOTIFICATION
- LIFE SAFETY EVACUATION ALARM AND COMMUNICATION SYSTEMS
- TEST AND INSPECTION SERVICES FOR THE ALARM DEVICES CONNECTED TO YOUR FIRE SUPPRESSION SYSTEM
- MAINTENANCE AND REPAIR SERVICES FOR THE ALARM DEVICES

FIRE SUPPRESSION SYSTEM

- Fire Hydrants
- Fire Cabinets
- Fire Sprinklers
- Gaseous Suppression System
- Fire Extinguishers
- Fire Pumps (UL and non UL Listed)
- Fire Rated Doors
- Fire Alarms System (Addressable and Conventional)



DIGITAL VOIP EXCHANGE SYSTEM

ASTERISK DIGITAL VOIP EXCHANGE SYSTEM
(WITH UNLIMITED USER EXTENSIONS) WITH
OPERATOR CONSOLE PANEL


Asterisk
IP-PBX



VoIP Phone



Softphone



Analog Telephone Adapter

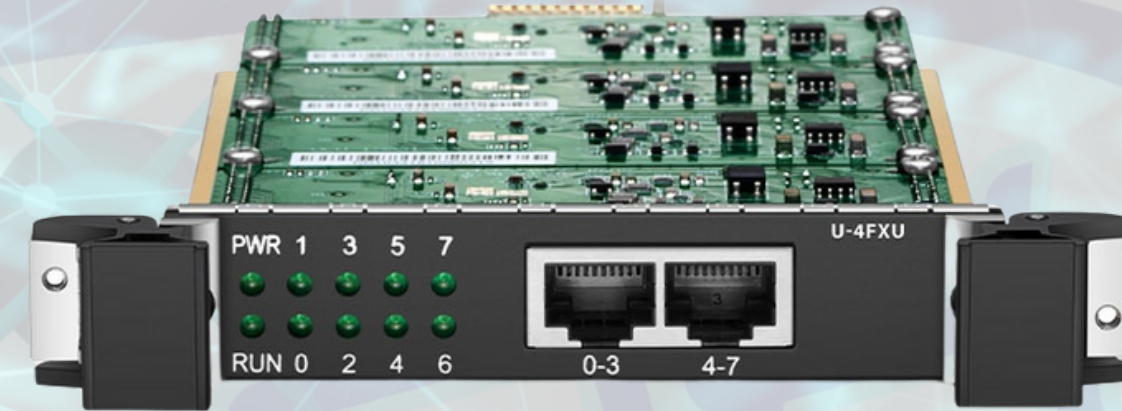


VoIP Phone



Analog Phone

**4-PORT, 8-PORT
12-PORT FXO GATEWAYS & CARDS**



**4-PORT, 8-PORT,
12-PORT, 48 PORT FXS GATEWAYS & CARDS**



VOIP DESKTOP PHONES



**ANDROID VOIP DESKTOP
PHONES**



SECURITY SURVEILLANCE SYSTEM

Customized and Ready Made Artificial Intelligence, Computer Vision Based Complete Solutions

HD Network Megapixel Cameras

high definition (HD) and standard definition (SD) are the number of pixels contained in the displayed image.

Fixed Speed DOME Cameras

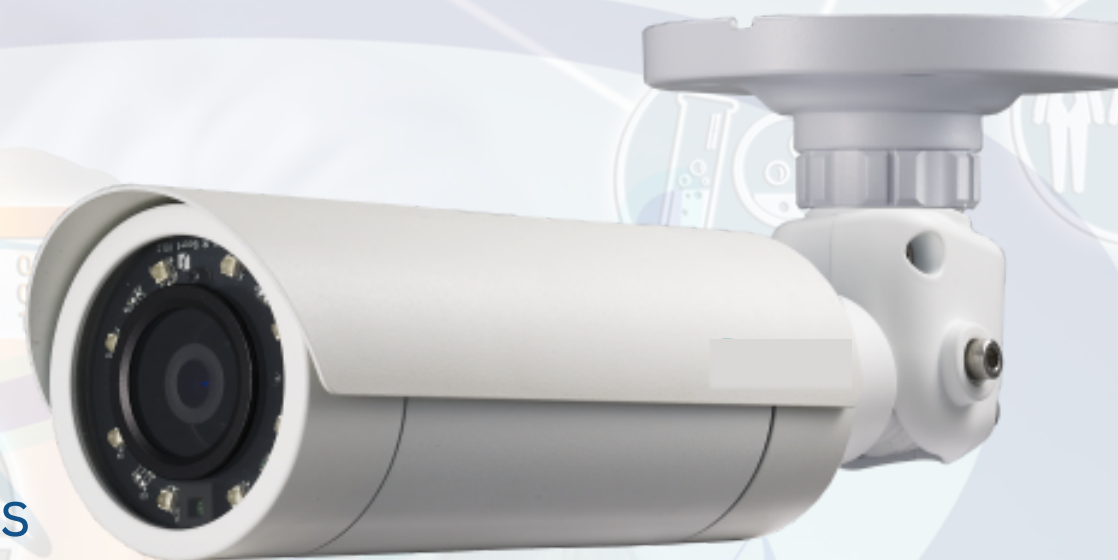
a type of camera designed for 360 degrees of pan and 180 degrees of tilt coverage.

Vandal Proof IP Cameras

are designed to be rugged and tough so that they will continue working when subjected to rough treatment.

PT DOME Cameras

the camera utilizes invisible IR light via its in-built IR LED to deliver optimum and discreet coverage of indoor spaces up to 10m, even in complete darkness.



- **Indoor/Outdoor PTZ DOME Cameras**

are built with mechanical parts that allow them to swivel left to right, tilt up and down, and zoom in and out of a scene.

- **Network Video Recorders**

that records video footage and stores it on a hard disk, a mass storage device, or cloud storage.

- **Video Controller Kits (Decoders)**

converts an encoded digital stream into audio, video, closed captions, and subtitles that can be displayed on a television or portable viewing device.



• VIDEO SURVEILLANCE

A video surveillance system is a critical component of a comprehensive security strategy. Airlinx is proud to offer the experience and expertise to design, install, service, and monitor a system that will fit your unique business needs, as well as integrate with your existing systems. Whether you're looking for basic local video surveillance systems or looking for your system to do more for your business, CSP can deliver the solution to you.



• **ADVANCED VIDEO SOLUTIONS**

From traditional local video surveillance to cutting-edge IP systems and cloud-based storage options, CSP can design, install, service, and monitor the right video system for your needs. With our expertise, we'll deliver the right video surveillance solution for your needs, including:

- **IP AND THERMAL CAMERA SYSTEMS**
- **LOCAL, NETWORK, AND CLOUD-BASED VIDEO STORAGE OPTIONS**
- **VIDEO MONITORING**
- **ADVANCED VIDEO ANALYTICS CAPABILITIES & REPORTING**
- **5 INTEGRATION WITH INTRUSION, ACCESS CONTROL, AND MORE**



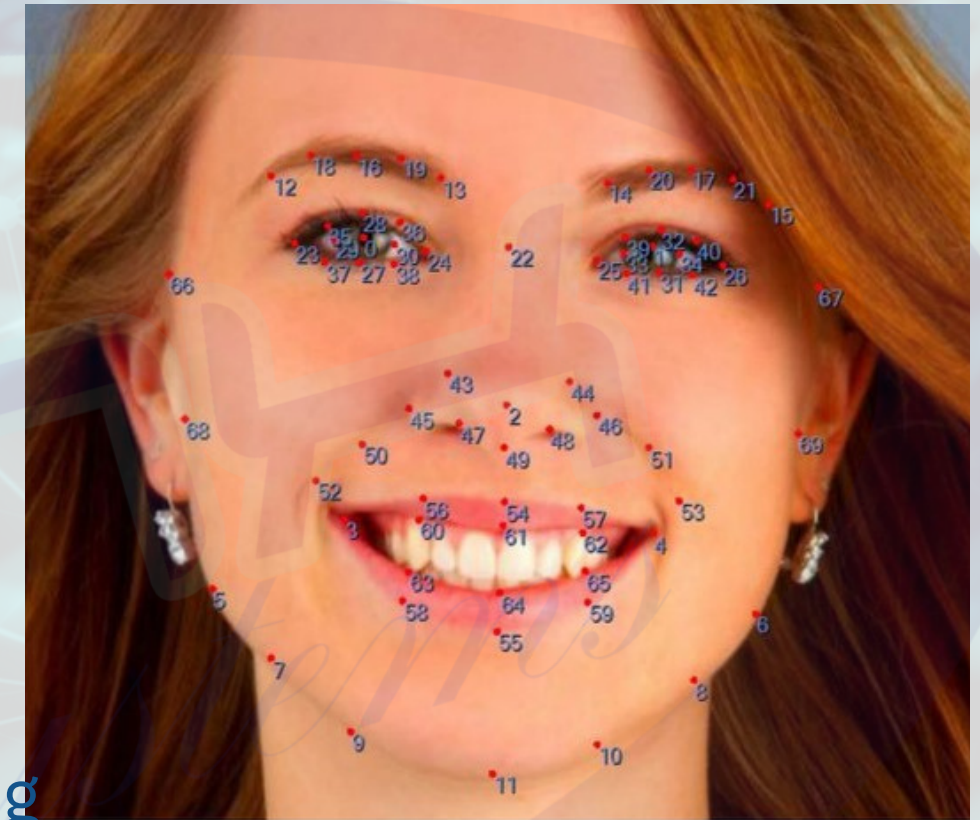
Any business can benefit from having a reliable surveillance camera system to deter theft, as well as monitor and document activities on the premises. Airlinx Security has highly trained technicians and engineers, and it's our goal to meet your security needs.

Face Capture and Face Recognition System

Artificial Intelligence Computer Vision Based

This smart camera is built with Robotics independently designed and developed an AI vision processor, integrating the world-leading the deep-learning algorithm, which realizes large-scale face detection, tracking, and captures on the front-end at lower power consumption

Suitable for sensitive areas and poor-security areas featured by a dense population, complex population structure, and great people flow frequency, including hospitals, Internet cafes, hotels, gymnasiums, long-distance passenger stations, railway stations, airports, docks, rail transit, subway entrance and other public places, and other scenarios related to public order and public security, such as urban traffic hubs, main channels for passengers, containers, entrances, and exits, corridors, escalators, cashier desks, etc.



FACE CAPTURE AND FACE RECOGNITION SYSTEM

Supports up to 16ch 1080P synchronous playback and multi-channel synchronous playback

Support channel grouping and preview tour.

Supports disk grouping quotas and disk group storage modes.

Support external alarm. Two-way voice intercom

Support WEB, mobile phone monitoring, client, CMS monitoring.

Support DDNS, EMAIL, UPNP, NTP, P2P and other functions.

Standard ONVIF, RTSP protocol.

Support preview image and playback image 12 times electronic magnification.

4 CH face recognition full-time 4K video access

can capture 25-30 faces at the same time

Support 4CH face simultaneous comparison

Support on-site photo, batch import, export face database

Support face recognition B&W list classification

≤ 10,000 pcs face libraries can be imported.

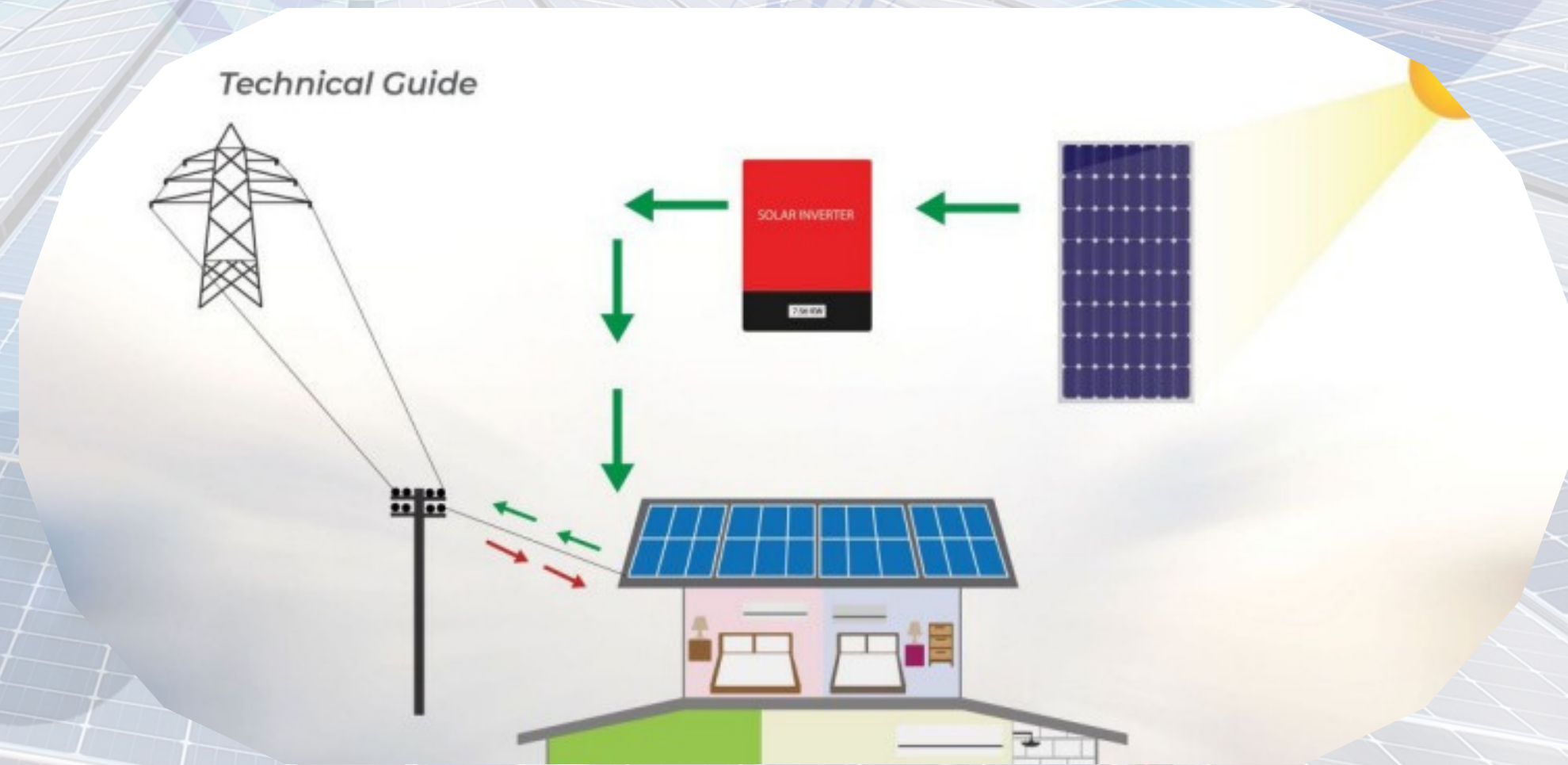
H.265/H.264/M-JPEG code stream decoding,

Solar System

We provide your desired services, on-grid, off grid, and hybrid solution. For your home, business industries, and agriculture. And this all is designed to facilitate you with the best solution for energy crisis in Pakistan. In order to have a proper check and balance international and national consultants and advisers supervise our work. Under their excellent supervision we perform our one hundred percent to satisfy the level of technology. Through our utmost effort and hard work, we produce the best quality products such as solar products. We have also solar fans, solar panels, solar water pumps, and solar air conditioners.

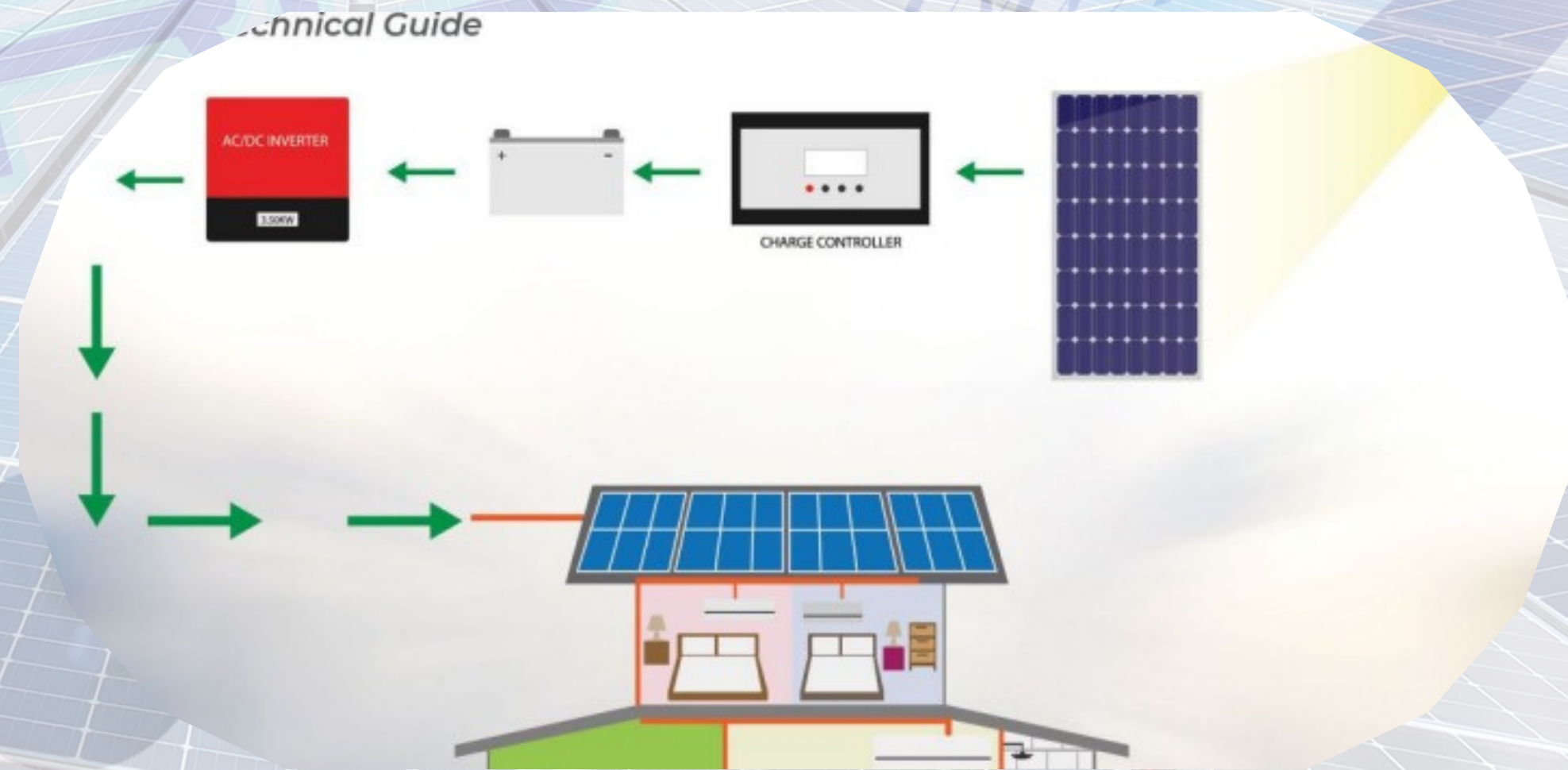
On-Grid Solar System

A grid inter-tied solar power system is directly connected to the traditional electric utility company. Grid inter-tied systems allow homeowners to get power from either the solar system or the utility grid. Switching between the solar system and the grid is seamless.



off-Grid Solar System

An Off-Grid system is completely disconnected from the traditional electric power grid. Without a connection to the utility grid, batteries are essential to balance period off excess periods of excess production and excess demand



Hybrid Solar System

Hybrid solar systems generate power in the same way as a common grid-tie solar system but use special hybrid inverters and batteries to store energy for later use. This ability to store energy enables most hybrid systems to also operate as a backup power supply during a blackout, similar to a UPS system.



TYPES OF SOLAR PANELS

Monocrystalline Solar Panels

Monocrystalline Solar panels to make solar cells monocrystalline solar panels, silicon is formed into bars and cut into wafers. Because the cell is composed of a single crystal, the electrons that generate a flow of electricity have more room to move. a UPS system.

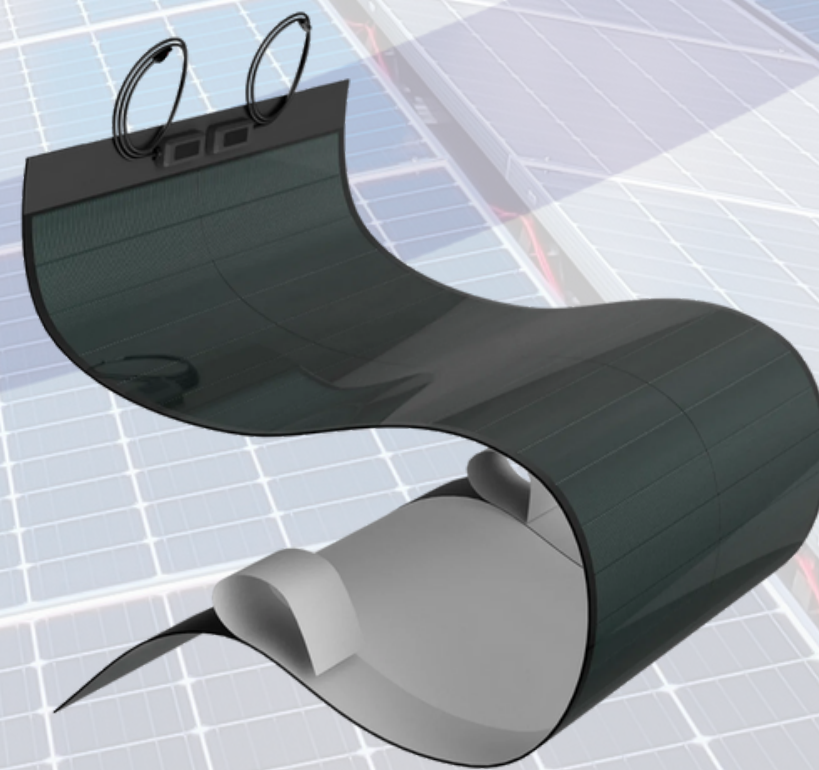
Polycrystalline Solar Panels

Polycrystalline solar panels are also made from silicon. However, instead of using a single crystal of silicon, manufacturers melt many fragments of silicon together to form the wafers for the panel



Thin Film Solar Panels

A thin-film solar cell is a second generation a solar cell that is made by depositing one or more thin layers, or thin film (TF) of photovoltaic material on a substrate, such as glass, plastic or metal. Thin-film solar cells are high in voltage.



TYPES OF INVERTORS

On-Grid inverters

A solar inverter converts the variable direct current (DC) output of a photovoltaic (PV) solar panel into a utility frequency alternating current (AC) that can be fed into a commercial electrical grid.

Grid-tied inverters

A grid-tie inverter converts direct current (DC) into alternating current (AC) suitable for injecting into an electrical power grid, normally 120 V RMS at 60 Hz or 240 V RMS at 50 Hz.

off-Grid inverters

An off-grid inverter needs a battery bank to function. Here's how it works: your solar panels feed DC power into the batteries. Then your inverter takes that power and "inverts" it, creating AC power for your home. This works essentially like a miniature power grid.

Variable Frequency Drive

A variable frequency drive (VFD) is a motor controller that drives an electric motor by varying the frequency and voltage of its power supply. The VFD also can control the ramp-up and ramp-down of the engine during start or stop, respectively.

Hybrid inverters

A hybrid inverter, otherwise known as a hybrid grid-tied inverter or a battery-based inverter, combines two separate components-a solar inverters and a battery inverter-into a single piece of equipment.

Senao/ Engenius INC.

SENAO is one of the leading organizations of the world, Specializing in the manufacture of a wide range of wireless products such as Bridges, Routers, Print Servers, Access Points, Card Bus Adaptors, PC Cards, LAN Accessories, WPABX, Long-range Cordless Phones, Mobile phones, ADSL Modems, ADSL Routers, ADSL Bridges, etc.

Walki Talki & Cordless Systems

- Walki Talki Systems, Cordless Systems, Hand Sets, and their deployment. Brands Included
- Kenwood
- Motorola
- ICOM
- Ericsson



Measuring & Data Acquisition System

We Design innovative solutions that link the physical and digital world, using advanced data and digital technologies. Unlock the full value of data to provide descriptive, diagnostic, predictive and prescriptive insights.

The high precision measurements offer reliable early warnings without the need for on-site personnel, bringing the necessary latency and continuity. Records transmit via remote, autonomous communication systems (radio, satellite, telephone), with data reception at any distance from the station in real-time or with a pre-established period. Solar panels and batteries ensure equipment can run for weeks and months without attention whilst continuously recording all weather details.

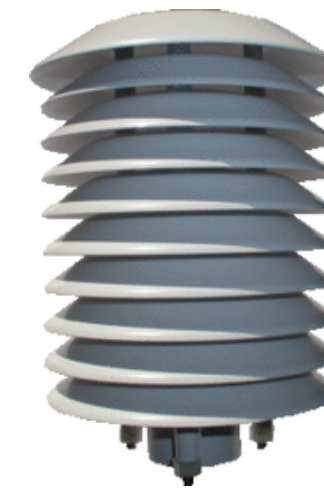
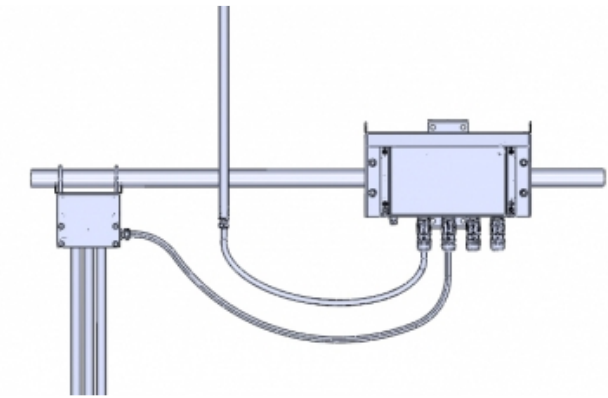
Instruments record maximum and minimum daily values within weather parameters and can track, for example, total monthly and yearly accumulated rainfall. Systems can amalgamate with the rest of the world's meteorological networks, comprehensive statistics can be automatically calculated and analysed, all running alongside Data Quality Control and Quality Assurance procedures.

We provides masts, towers or tripods of different materials, heights, and types (fixed, tilting or pneumatic). We offer easy to install and maintain, high-quality precision sensors, too: thermometer, anemometer, wind vane, hygrometer, barometer, rain gauge and pyranometers.

We also offer special sensors that can detect precipitation type, current weather, prevailing visibility, soil moisture, lightning, ceilometers and more. We can also provide calculated variables such as dew point, atmospheric pressure referenced to sea level, maximum wind gusts and more.

Several brands of data logger are available and we always store them in outdoor enclosures to protect the equipment and electronics from damage.

Telemetry equipment and communications devices capable of data transmission use GSM, GPRS, 3G, 4G, satellite or radio technologies to transmit data, and we can even look at sending data through some redundant communication architectures if required.






Servers, Workstations, High-Performance Computing & Blade Servers

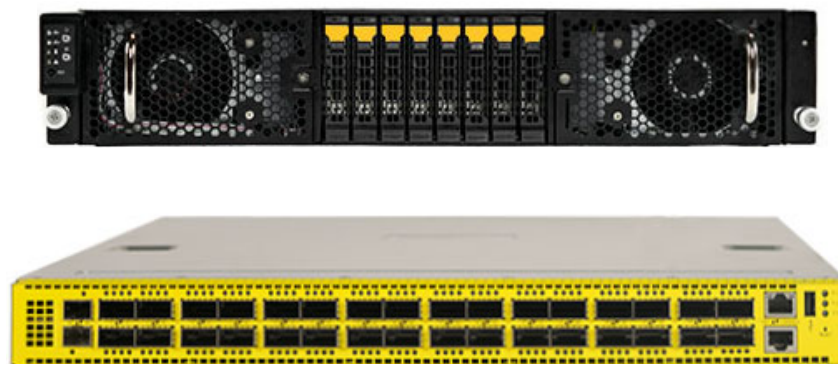
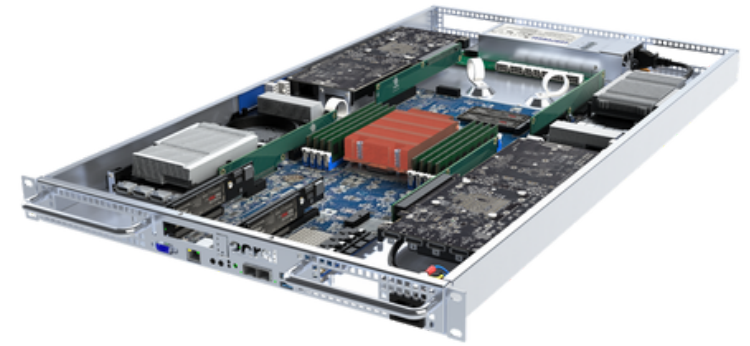
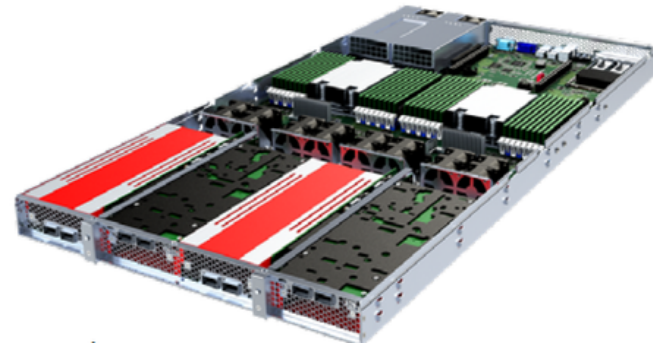
We design highly advanced infrastructure, machines, and networked systems. Our solutions enable the world's most innovative enterprises and government institutions to build an autonomous future, drive discovery and amplify human potential.

Overcome otherwise insurmountable data and performance challenges with advanced machines and networked systems that we architect for the most demanding workloads across the compute continuum.

We connect the technology dots others can't to design, build, and maintain end-to-end AI, HPC, and edge infrastructure faster while shielding your team from the underlying complexity.

Working alongside your innovation teams, we boldly push the limits of technology to advance scientific discovery, accelerate the autonomous future, and enable you to find answers to humanity's grandest challenges.





PENGUIN
SOLUTIONS

2crsi



ADVANCED HPC

Our Partners



Our Clients

We have our clientage in almost every sector that not only includes private but also public sector as well. We provide almost every kind of solution one needs to communicate from an individual to a public limited company, amongst our valuable clients here are some to name a few,



